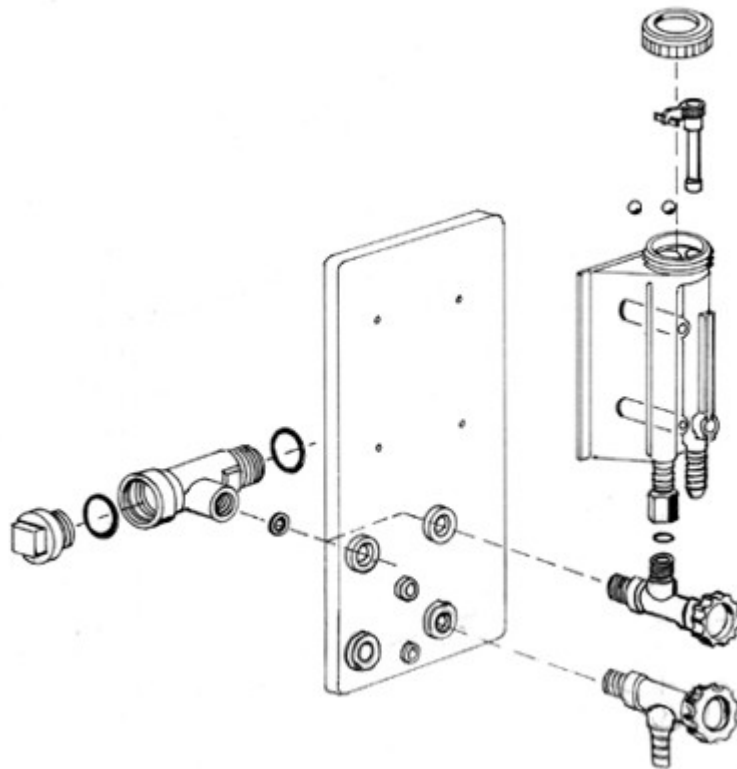


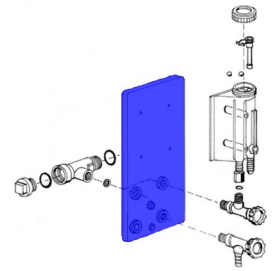
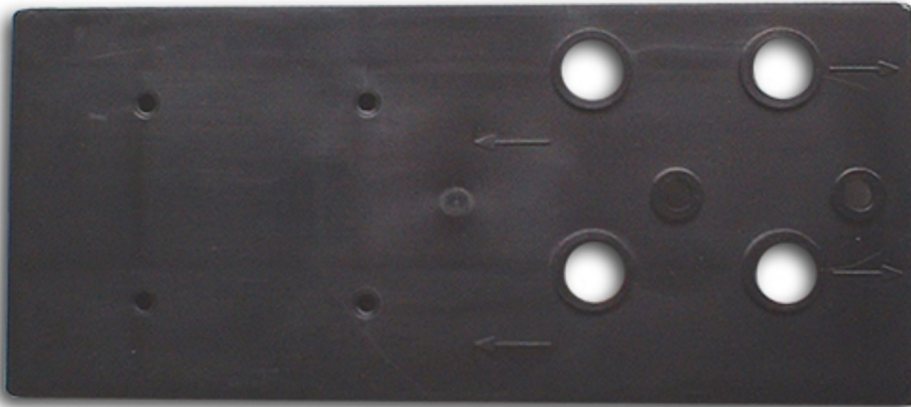


Spare Parts List

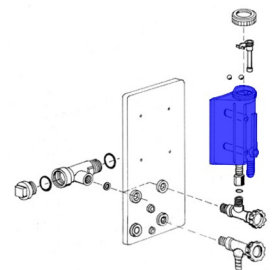
Type 500 und Type 2000



No.1 - Mounting plate (Type 500 & 2000)



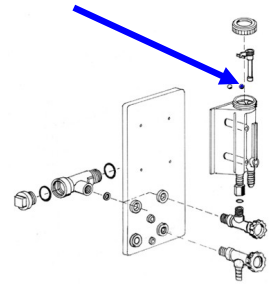
No.2 - Measuring housing (Type 500 & 2000)



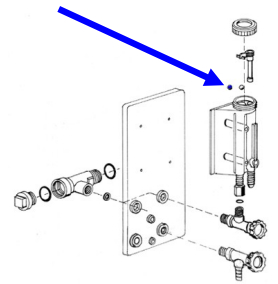


Spare Parts List

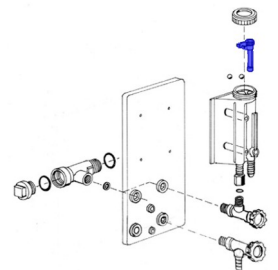
No.3 - Steel ball (Type 500 & 2000)



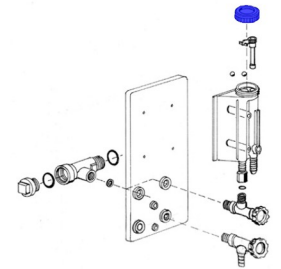
No.4 - Plastic ball (Type 500 & 2000)



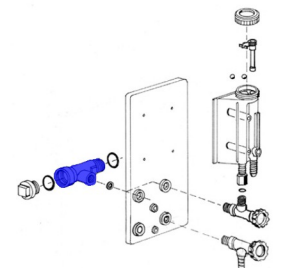
No.5 - Rotary-wing use (Type 500 & 2000)



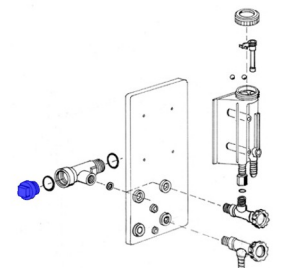
No.6 - Cover (Type 500 & 2000)



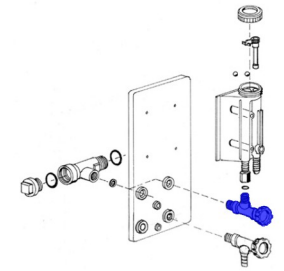
No.7 - Fitting (Type 500 & 2000)



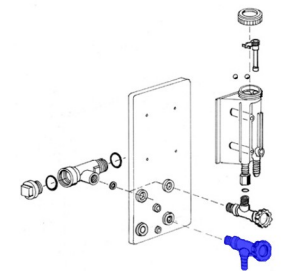
No.8 - End plugs (on Type 2000 cover)



No.9 - Valve with chassis connection (Type 500 &



No.10 - Valve with hose connection (Type 500 & 2000)



No.11 - Cylinder brush (Type 500 & 2000)



Filter inserts (Type 500 & 2000)



Angle hose nozzle Ø 12 mm (Type 500 & 2000)



Angle hose nozzle Ø 19 mm (Type 500 & 2000)

